

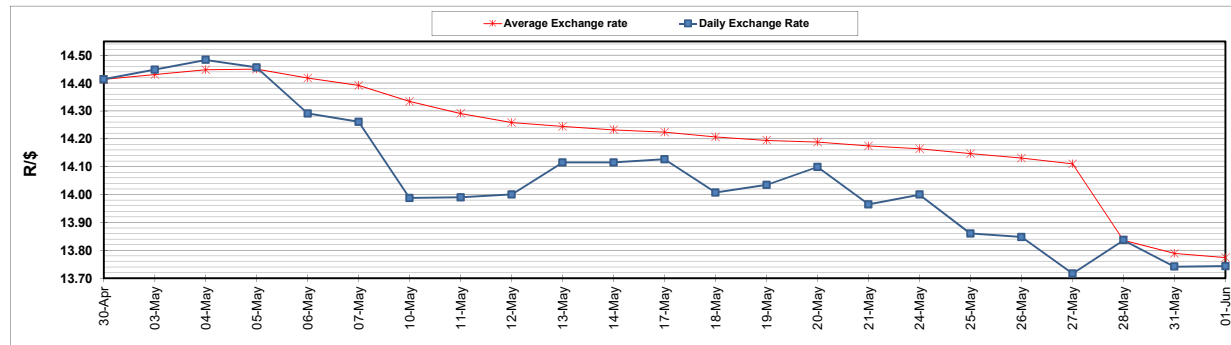
	PETROL 95 ULP	PETROL 93 ULP & LRP	DIESEL 0.05%	DIESEL 0.005%	ILL. PAR.
GAUTENG PUMP PRICE (SA c/l) AS FROM 02/06/2021	1,713.000	1,691.000	-	-	-
WHOLESALE PRICE (SA c/l) AS FROM 02/06/2021	-	-	1,466.620	1,471.020	877.488
SINGLE NATIONAL MAXIMUM RETAIL PRICE	-	-	-	-	1,102.000
BASIC FUEL PRICE - 01/06/2021 (SA c/l)	708.783	700.056	687.290	691.640	669.467
PRESS RELEASE CONTRIBUTION TO BFP 28/05/2021 - 01/06/2021 (SA c/l)	727.170	715.170	659.630	663.030	644.128
UNIT OVER/(UNDER) RECOVERY - 01/06/2021 (SA c/l)	18.387	15.114	(27.660)	(28.610)	(25.339)
AVERAGE BASIC FUEL PRICE 28/05/2021 - 01/06/2021	709.062	699.584	683.317	687.899	664.132
AVERAGE UNIT OVER/(UNDER) RECOVERY 28/05/2021 - 01/06/2021	18.108	15.586	(23.687)	(24.869)	(20.004)

### ANALYSIS MOVEMENT OF AVERAGE OVER/(UNDER) RECOVERY

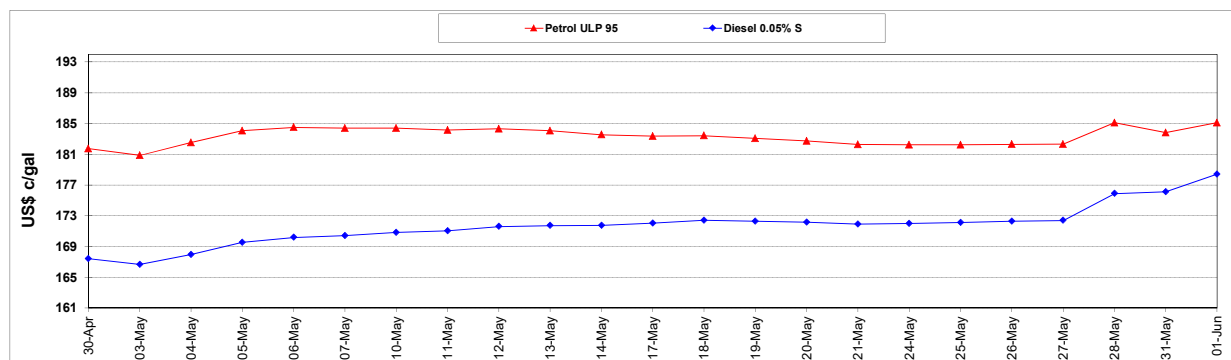
	PETROL 95	PETROL 93	DIESEL 0.05%	DIESEL 0.005%	ILL. PAR.
- MOVEMENT IN INTERNATIONAL PRODUCT PRICES	0.744	(1.546)	(40.421)	(41.715)	(36.268)
- MOVEMENT IN EXCHANGE RATE	17.364	17.132	16.734	16.846	16.264
AVERAGE UNIT OVER/(UNDER) RECOVERY 28/05/2021 - 01/06/2021	18.108	15.586	(23.687)	(24.869)	(20.004)

**R/\$ EXCHANGE RATE - (R/\$13.7428- 01/06/2021)**

### EXCHANGE RATE USED IN BASIC FUEL PRICE



### INTERNATIONAL PRODUCT PRICES OF BASKET USED IN BASIC FUEL PRICE



### BASIC FUEL PRICE IN SA CENTS PER LITRE

